



R32 INVERTER COOLING  
WINDOW-TYPE ROOM

---

# Remote Controller Operation Manual

Model:

RC-S70U

RC-S90U

RC-S120U

RC-S180U

RC-S240U

**IMPORTANT NOTE:**

Thank you for purchasing our air conditioner. Please read this manual carefully before operating your new air conditioning unit. Make sure to save this manual for future reference.

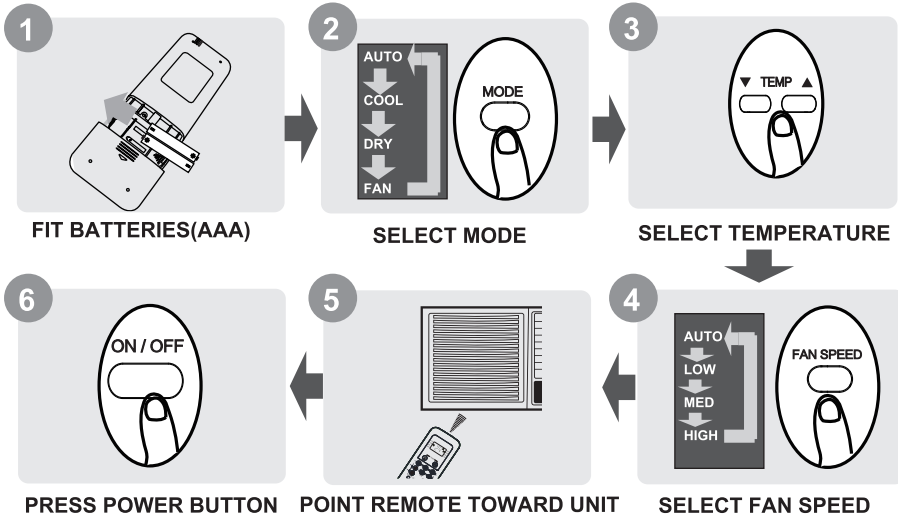
# Table of Contents

<b>Remote Controller Specifications .....</b>	<b>02</b>
<b>Handling the Remote Controller .....</b>	<b>03</b>
<b>Buttons and Functions .....</b>	<b>04</b>
<b>Remote Screen Indicators .....</b>	<b>06</b>
<b>How to Use Basic Functions .....</b>	<b>07</b>
<b>How to Use Advanced Functions .....</b>	<b>10</b>

# Remote Controller Specifications

Model	RC-S70U, RC-S90U, RC-S120U, RC-S180U, RC-S240U
Rated Voltage	3.0V( Dry batteries AAA)
Signal Receiving Range	8m
Environment	-5°C~60°C(23°F~140°F)

## Quick Start Guide



NOT SURE WHAT A FUNCTION DOES?

Refer to the **How to Use Basic Functions** and **How to Use Advanced Functions** sections of this manual for a detailed description of how to use your air conditioner.

### SPECIAL NOTE

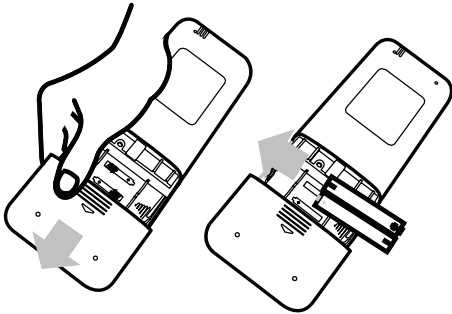
- Button designs on your unit may differ slightly from the example shown.
- If the indoor unit does not have a particular function, pressing that function's button on the remote control will have no effect.
- When there are wide differences between "Remote controller Manual" and "OPERATION AND INSTALLATION MANUAL" on function description, the description of "OPERATION AND INSTALLATION MANUAL" shall prevail.

# Handling the Remote Controller

## Inserting and Replacing Batteries

Your air conditioning unit come with two batteries. Put the batteries in the remote control before use.

1. Slide the back cover from the remote control downward, exposing the battery compartment.
2. Insert the batteries, paying attention to match up the (+) and (-) ends of the batteries with the symbols inside the battery compartment.
3. Slide the battery cover back into place.



## ! BATTERY NOTES

For optimum product performance:

- Do not mix old and new batteries, or batteries of different types.
- Do not leave batteries in the remote control if you don't plan on using the device for more than 2 months.



## BATTERY DISPOSAL

Do not dispose of batteries as unsorted municipal waste. Refer to local laws for proper disposal of batteries.

## TIPS FOR USING REMOTE CONTROL

- The remote control must be used within 8 meters of the unit.
- The unit will beep when remote signal is received.
- Curtains, other materials and direct sunlight can interfere with the infrared signal receiver.
- Remove batteries if the remote will not be used more than 2 months.

## CAUTIONS FOR USING REMOTE CONTROL

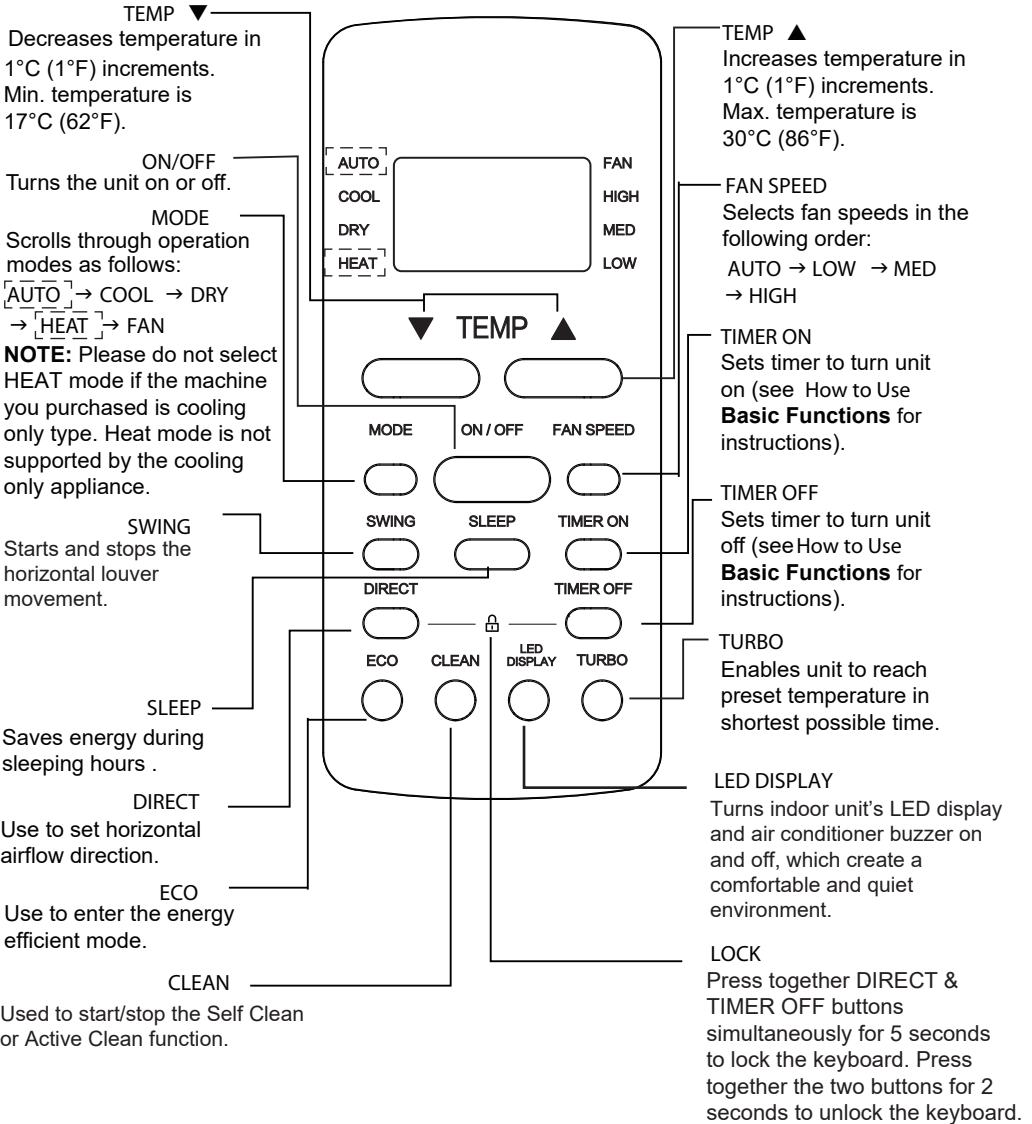
The device could comply with the local national regulations.

These are designed to provide reasonable protection against harmful interference in a residential installation. This equipment generates, uses and can radiate radio frequency energy and, if not installed and used in accordance with the instructions, may cause harmful interference to radio communications. However, there is no guarantee that interference will not occur in a particular installation. If this equipment does cause harmful interference to radio or television reception, which can be determined by turning the equipment off and on, the user is encouraged to try to correct the interference by one or more of the following measures:

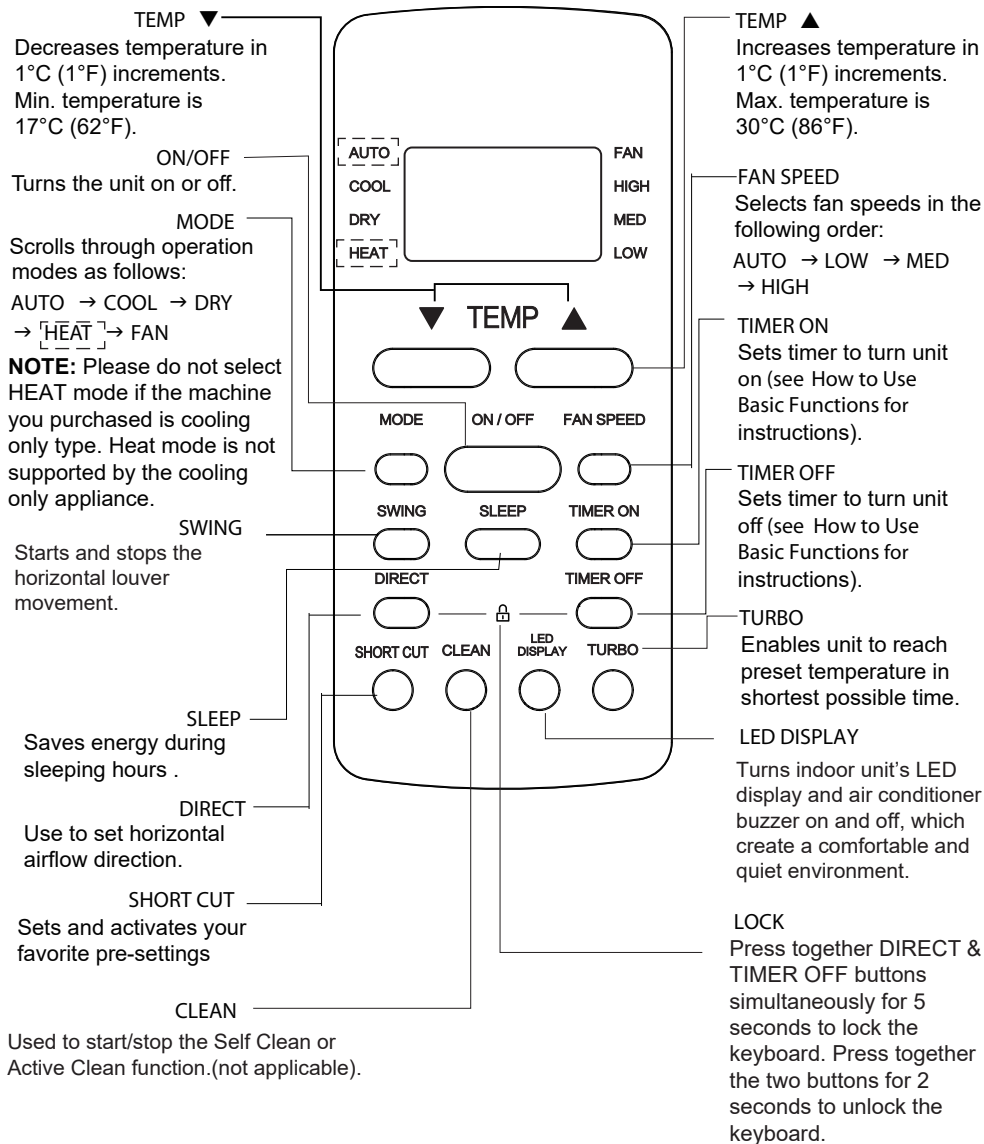
- Reorient or relocate the receiving antenna.
- Increase the separation between the equipment and receiver.
- Connect the equipment into an outlet on a circuit different from that to which the receiver is connected.
- Consult the dealer or an experienced radio/TV technician for help.
- Changes or modifications not expressly approved by the party responsible for compliance could void user's authority to operate the equipment.

# Buttons and Functions

Before you begin using your new air conditioner, make sure to familiarize yourself with its remote control. The following is a brief introduction to the remote control itself. For instructions on how to operate your air conditioner, refer to the **How to Use Basic Functions** section of this manual.



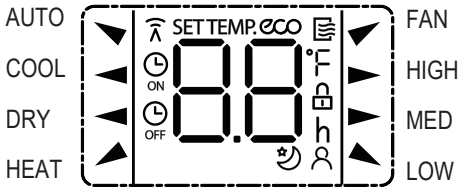
**Model:** RC-S70U, RC-S90U, RC-S120U



**Model:** RC-S180U, RC-S240U

## Remote Screen Indicators

Information are displayed when the remote controller is power up.



### Mode display

AUTO ▼	Auto mode
COOL ◀	Cool mode
DRY ◀	Dry mode
HEAT ▶	Heat mode(not applicable)
FAN ▼	Fan mode



Displayed when data transmitted.



Displayed when remote controller is ON.



Displayed when TIMER ON time is set



Displayed when TIMER OFF time is set



Shows set temperature or room temperature, or time under TIMER setting



Displayed when ECO feature is activated



Indicated all the current settings are locked



Displayed when Follow Me feature is activated(not applicable)



Displayed when SLEEP feature is activated

### Fan speed indication

▶ HIGH	High speed
▶ MED	Medium speed
▶ LOW	Low speed
NO display	Auto fan speed

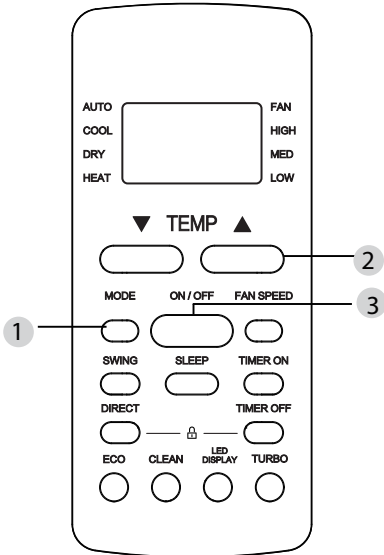
### Note:

All indicators shown in the figure are for the purpose of clear presentation. But during the actual operation, only the relative function signs are shown on the display window.

# How to Use Basic Functions

## Basic operation

**ATTENTION!** Before operation, please ensure the unit is plugged in and power is available.



## COOL Mode

1. Press the **MODE** button to select **COOL** mode.
2. Set your desired temperature using the **TEMP ▲** or **TEMP ▼** button.
3. Press **FAN** button to select the fan speed: AUTO, LOW, MED or HIGH.
4. Press the **ON/OFF** button to start the unit.

## SETTING TEMPERATURE

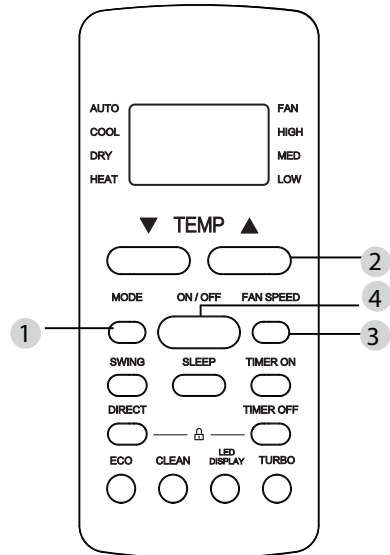
The operating temperature range for units is 17-30°C (62-86°F)/20-28°C. You can increase or decrease the set temperature in 1°C (1°F) increments.

## AUTO Mode

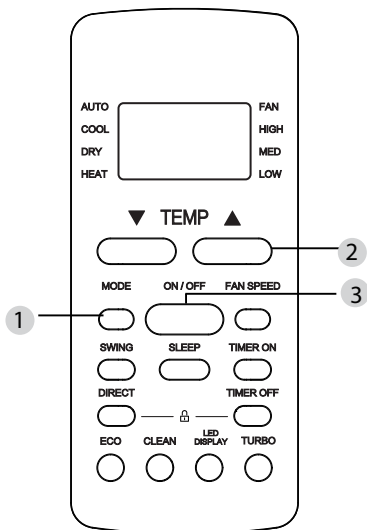
In AUTO mode, the unit will automatically select the COOL, FAN, or HEAT(not applicable for cooling only model) operation based on the set temperature.

1. Press the **MODE** button to select **AUTO**.
2. Set your desired temperature using the **TEMP ▲** or **TEMP ▼** button.
3. Press the **ON/OFF** button to start the unit.

**NOTE:** FAN SPEED can't be set in AUTO mode.







## DRY Mode

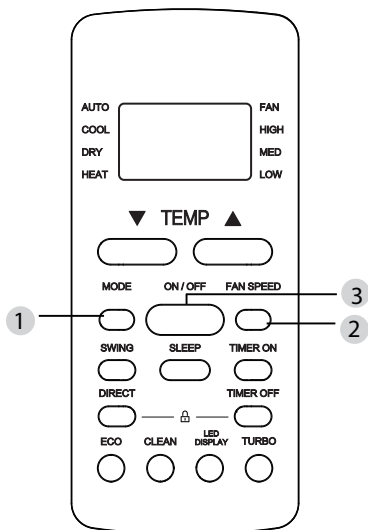
1. Press the **MODE** button to select **DRY**.
2. Press the **ON/OFF** button to start the unit.

**NOTE:**FAN SPEED cannot be changed in DRY mode.

## FAN Mode

1. Press the **MODE** button to select **FAN** mode.
2. Press **FAN** button to select the fan speed: AUTO, LOW, MED or HIGH.
3. Press the **ON/OFF** button to start the unit.

**NOTE:**You can't set temperature in FAN mode. As a result, your remote control's LCD screen will not display temperature.



## Setting the TIMER

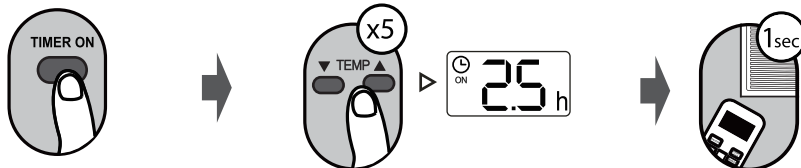
**TIMER ON/OFF** - Set the amount of time after which the unit will automatically turn on/off.

### TIMER ON setting

Press **TIMER ON** button to initiate the ON time sequence.

Press **Temp. up** or **down** button for multiple times to set the desired time to turn on the unit.

Point remote to unit and wait 1sec, the **TIMER ON** will be activated.

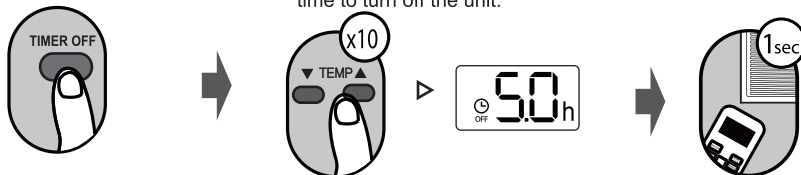


### TIMER OFF setting

Press **TIMER OFF** button to initiate the OFF time sequence.

Press **Temp. up** or **down** button for multiple times to set the desired time to turn off the unit.

Point remote to unit and wait 1sec, the **TIMER OFF** will be activated.

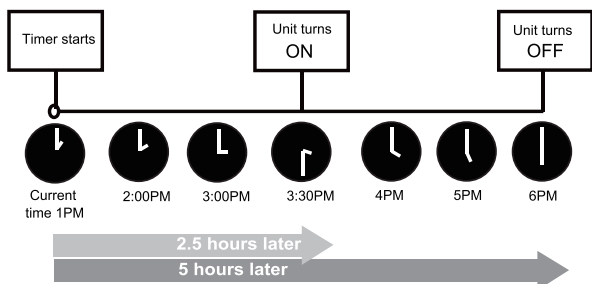
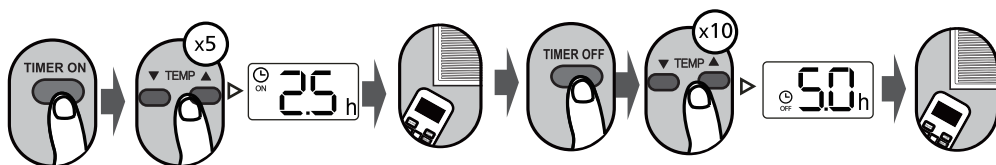


#### NOTE:

- When setting the **TIMER ON** or **TIMER OFF**, the time will increase by 30 minutes increments with each press, up to 10 hours. After 10 hours and up to 24, it will increase in 1 hour increments. (For example, press 5 times to get 2.5h, and press 10 times to get 5h.) The timer will revert to 0.0 after 24.
- Cancel either function by setting its timer to 0.0h.

### TIMER ON & OFF setting(example)

Keep in mind that the time periods you set for both functions refer to hours after the current time.



Example: If current time is 1:00PM, to set the timer as above steps, the unit will turn on 2.5h later (3:30PM) and turn off at 6:00PM.

# How to Use Advanced Functions

## Swing function

Press Swing button



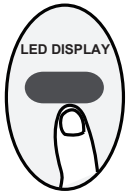
The horizontal louver will swing left and right automatically when pressing Swing button. Press again to make it stop.

## Airflow direction



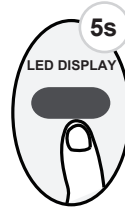
Each time you press the button, it will adjust the horizontal louver left or right by 6 degrees. Press the button until the direction you prefer is reached.

## LED DISPLAY



Press LED button

Press this button to turn on and turn off the display on the indoor unit.



Press this button more than 5 seconds

Keep pressing this button more than 5 seconds, the control panel unit will display the actual room temperature. Press more than 5 seconds again will revert back to display the setting temperature.

## ECO function



Press this button to enter the energy efficient mode.  
(For model RC-S70U, RC-S90U and RC-S120U only)  
**Note:**This function is only available under COOL mode.

Under cooling mode, press this button, the remote controller will adjust the temperature automatically to 24°C/75°F, fan speed of Auto to save energy (only when the set temperature is less than 24°C/75°F). If the set temperature is above 24°C/75°F, press the ECO button, the fan speed will change to Auto, the set temperature will remain unchanged.

### NOTE:

Pressing the ECO button, changing the mode or adjusting the set temperature to less than 24°C/75°F will stop ECO operation.

Under ECO operation, the set temperature should be 24°C/75°F or above, it may result in insufficient cooling. If you feel uncomfortable, just press the ECO button again to stop it.

## SLEEP function



This setting enables the human body to enter sleep and automatically adjust the temperature to achieve sleep comfort and energy-efficient operation.

This function can only be activated via remote control. The sleep function is not available in Fan or Dry mode. Please refer to the OPERATION AND INSTALLATION MANUAL for more details.

## SHORTCUT function



Used to store the current settings or restore previous settings.  
(For model of RC-S180U and RC-S240U only)

On the first time connecting to the power, if press the SHORT CUT button, the unit will operate on AUTO mode, 26°C and fan speed is Auto.

Press this button when remote controller is on, the system will automatically restore to the previous settings including operating mode, setting temperature, fan speed level and sleep feature (if activated).

If pressing this button more than 2 seconds, the system will automatically store the current operation settings including operating mode, setting temperature, fan speed level and sleep feature.

## ● Special Avowal

- 1. The information above has been checked; our company reserves the hermeneutic power to any print errors or misunderstanding on the content.**
- 2. Any technology improvement will add into new instruction without any prior notices. The product appearance and color refer to the practical air conditioner.**
- 3. The e-copy of user manual can be sent by e-mail on requested, please call Shun Hing Electric Works & Engineering Co. Ltd. hotline at 2861 2767.**

## ● After sale service

Guarantee period state from the date of purchasing to one year. If the product is damaged under proper use, a free repair service is available. Please present the official invoice and the guarantee certificate with the sales point's chop / redemption center's chop for free maintenance. For enquiries, please contact Shun Hing Electric Service Centre Limited hotline at 2406 5666.

**Turn off the power and contact Shun Hing Electric Service Centre Ltd. as soon as any of the following events occur.**

- The circuit breaker frequently trips or the fuse blows regularly.
- If water or foreign objects have accidentally entered the air conditioner.
- If there is abnormal sound during operation.

**信興電工工程有限公司**

**SHUN HING ELECTRIC WORKS & ENGINEERING CO., LTD**

辦公室: 香港九龍尖沙咀東部麼地道 67 號半島中心 9 樓

OFFICE: 9/F, PENINSULA CENTRE, 67 MODY ROAD, TSIMSHATSUI EAST,  
KOWLOON, HONG KONG

電話 TEL: (852) 2861 2767

傳真 FAX: (852) 2865 6706

網址 WEBSITE: [www.rasonic.com](http://www.rasonic.com)

電郵 EMAIL: [shew@shunhinggroup.com](mailto:shew@shunhinggroup.com)

**保養及維修 MAINTENANCE AND REPAIR SERVICE**

**信興電器服務中心有限公司**

**SHUN HING ELECTRIC SERVICE CENTRE LTD.**

辦公室: 香港新界葵涌勝耀街2號信興中心11樓

OFFICE: 11TH FLOOR, SHUN HING CENTRE, 2 SHING YIU STREET, KWAI CHUNG, NEW  
TERRITORIES, HONG KONG

電話 TEL: (852) 2406 5666

傳真 FAX: (852) 2408 0316

網址 WEBSITE: [www.shesc.com](http://www.shesc.com)

**消耗品/附件銷售熱線 CONSUMABLES/ ACCESSORIES SALES HOTLINE**

電話 TEL: (852) 2406 5666

**客戶服務中心 CUSTOMER SERVICE CENTRES**

香港新界葵涌勝耀街2號信興中心1樓

1ST FLOOR, SHUN HING CENTRE, 2 SHING YIU STREET, KWAI CHUNG, NEW  
TERRITORIES, HONG KONG

電話 TEL: (852) 2406 5439

傳真 FAX: (852) 2408 1389

澳門慕拉士大馬路193-199號南嶺工業大廈5樓1座

AVENIDA DE VENCESLAU DE MORAIS, NO. 193-199, 5 ANDAR-I, EDF. INDUSTRIAL  
NAM LENG, MACAU

電話 TEL: (853) 2836 2928

傳真 FAX: (853) 2833 6405

有關最新之客戶服務中心資訊, 請參閱信興服務中心網址: [www.shesc.com](http://www.shesc.com)或致電維修服務熱線查詢。

For the latest information of customer service centres, please visit [www.shesc.com](http://www.shesc.com) or call us at our hotline.